

From: Ellen Rice <ellenrice@mchsi.com>

Subject: Saturday Winter Wonderland fun, Disney and "the winner is...."

Preheader: Winter Wonderland festivities Dec. 3, 10 and 17!

Reply: ellenrice@mchsi.com

Hi, just a reminder that you're receiving this email because you have expressed an interest in The Ellen Rice Gallery. Don't forget to add ellenrice@mchsi.com to your address book so we'll be sure to land in your inbox!

You may [unsubscribe](#) if you no longer wish to receive our emails.



Laura and Norm Provost are the winners of my 2016 SEDAST Art in the Hat raffle donation, a conservation framed, oil embellished, gicle'e on canvas of my painting, Evening Splendor. Ticket proceeds this year raised \$3,160, all of which is going to local school arts programs this week. This brings the total that the SEDAST artists have raised to over \$56,000! Congratulations to the winners and the schools, and thank you everyone who purchased tickets!

Hi

I don't usually write this often, but this Saturday is full of events in Bethany and I thought you'd want to know about a few of them, including the first day of the town's 2nd Annual Winter Wonderland festivities, tree lighting and caroling. The town has been transformed, and it's worth experiencing!

Saturday, 10-5, at my gallery. Disney certified Glass Slipper Concierge travel advisor Duane

Whitman (my gallery's manager) will present "Insider Tips to Disney Travels in 2017 and 2018."

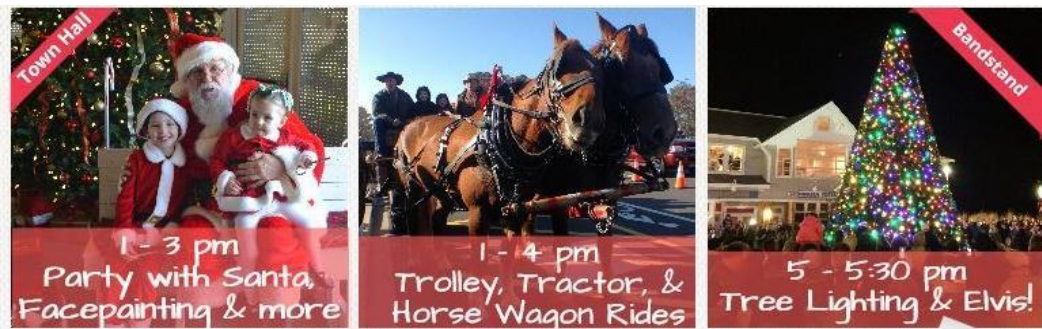
Videos will be shown, free literature is available and (real) hot apple cider and light holiday refreshments will be served. See [this Cape Gazette article](#) or call Duane at 302-448-1534 for more information and help with your vacation plans. If you're contemplating giving a Disney trip to your loved ones this holiday season, plan to visit with him before booking. Successful Disney trips are ones well planned by a top-rated, experienced advisor who cares.



Duane Whitman, gallery manager and award-winning, Disney-certified Glass Slipper Concierge travel advisor for all places Disney.

Saturday, 1-5 at my gallery. Print signing and continuation of my annual Thanksgiving collector appreciation savings. This year the savings is 20% off [all signed, numbered limited edition prints](#). The savings ends this Sunday, Dec. 4, at 4 p.m., so there's still time to benefit from this one-time opportunity. If there's a special piece you'd like me to personalize on Saturday I'll be happy to do so.

Saturday, 1-6 all over downtown Bethany Beach: Winter Wonderland, including tree lighting, Santa visits, horse-drawn trolley rides and caroling, begins this Saturday (Dec. 3) in Bethany at 1 p.m. It's the first of three Winter Wonderland Saturdays for the whole family. Click on the images and link below to learn more.



Bethany's 2nd Annual Winter Wonderland festivities are Dec. 3, 10 and 17.
[Here's a list of events for all three weekends.](#)

The Winter Wonderland festivities are a combined effort of the Bethany-Fenwick Chamber of Commerce and downtown Bethany Beach store owners. The hope is that the events make people aware of unique shopping opportunities in Bethany - and perhaps spend some tax-free dollars here.

All of us depend on you to keep our doors open. Shopping here now -- and through the winter -- helps small businesses like mine stay in business period. Many of us are have brought in wonderful holiday gift giving ideas. We hope you'll spend a little time shopping with us.

Below, a handful of unique gift ideas to check out at the gallery this weekend - mostly in the well under \$50 range.



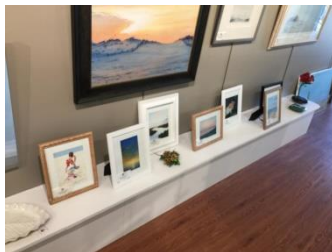
This is a new custom color of Leaf Leather exclusively made for the Ellen Rice Gallery, "Caribbean," a combination of three dyes, each rubbed in separately with CL's new seahorse design. Prices vary.



Ellen's 2017 wall calendars are here! Heavy paper, beautiful colors, 11 x 16, only \$9.95.



New hummingbird spirit rattles. We've waited months to get John's new hummingbird design. Only \$24.95 but only 3 arrived. Please stop in soon or call us at 302-539-3405 to order these or other designs.



We've just framed a lot of mini-gicle'es of Ellen's paintings for easy gift giving. The archival (won't fade) 8x10 prints are \$45 unframed. Framed minis start at \$65, price depending on frame. Stop in or special order minis of [many of Ellen's prints](#) by calling the gallery at 302-539-3405.



Handcut, sculpted & patinaed copper ornaments from a talented friend are under \$25. Designs include angels, fish, crabs, mermaids, butterflies, dragonflies, hummingbirds, sailing boats, seahorses, turtles, starfish, owls, ladybugs, sandals & scuba gear.



These lovely new individually handmade, solid sterling silver dangle earrings were featured for the quality of workmanship. Perhaps a gift for the musicians in your life. Priced at \$45.



Light, airy, elegant, hand painted aluminum, silver and bead earrings by designer Terri Singerman are on trend, match an array of beautiful colors and draw a

lot of complements. Posts & danglers are priced from \$34.



We've added more of Ellen's paintings to our mousepad designs. From left to right are "[Treasure Beaches of the Mid-Atlantic](#)," "[Morning](#)," "[Winds of Time](#)," "[Night Settles Over Fenwick](#)," "[Timeless, Tameless Tide](#)" and "[Enchanted Moment](#)." They're popular and special gifts for all ages, the kind that keep on giving. All are \$15.95.



Ellen's added three mug designs featuring her paintings. These, too, are gifts that keep on giving, bringing back pleasant memories while sipping morning coffee. Microwave safe designs are, from left to right, [the Addy Sea](#) "[Out of the Mist](#)," "[Summer Dreams](#)," "[The Best Time, Bethany](#)," "[The Winds of Time](#)," "[Morning's First Catch](#)," "[Dancing Grasses](#)," "[Seclusion](#)," "[Spring Promise](#)" and "[Timeless, Tameless Tide](#)."

Priced at \$19.95, all can be purchased by stopping in the gallery or calling 302-539-3405.

There's not enough room here to include all of our gifts under \$50, but I hope I've given you a few ideas. I truly appreciate every purchase at my gallery. Your purchases make it possible for the Ellen Rice Gallery to exist. Thank you very much for your continued support of my work and that of the artists and artisans we represent.

I was glad to see so many of you during last weekend's studio tour and am very much looking forward to seeing more of you during the next few week's holiday festivities -- and beyond. We'll be open all winter.

I hope to see you soon!

A handwritten signature in black ink, appearing to read "Ellen Rice".