

**From:** Ellen Rice <ellenrice@mchsi.com>

**Subject:** My 7th Strength of Woman painting and a rainbow of inspirations debut 8:30 a.m. Friday

**Preheader:** Part of the free, self-guided 22nd annual SEDAST art studio tour

**Reply:** ellenrice@mchsi.com

Hi, just a reminder that you're receiving this email because you have expressed an interest in The Ellen Rice Gallery. Don't forget to add ellenrice@mchsi.com to your address book so we'll be sure to land in your inbox!

You may [unsubscribe](#) if you no longer wish to receive our emails.



The vastness of infinity surrounds the calmly sleeping subject of Ellen's 7th Strength of Woman painting, shown in part here nearing completion.

## Happy Thanksgiving

As I write, a cold wind is blowing outside my window, but the sun is shining and some of the trees are still wearing their most brilliant colors. They won't last much longer if the wind keeps up, but you will find some beautiful, freshly painted colors in my gallery this weekend during my annual Thanksgiving weekend Studio Tour Open House festivities, this Friday and Saturday, Nov. 25 & 26, beginning Friday **at 8:30 a.m.!**

Friday morning will bring the debut of three new paintings and two new prints and also



*Those who have been asking about "the rainbow painting" they've seen Ellen working on in the gallery will be happy to see the original and prints debut this Friday morning at the beginning of the Ellen's Studio Tour Open House.*

### **Parking!!**

Beginning festivities early both days of the tour is to help you find easy nearby parking on this busy holiday weekend in Bethany.

Most of the shops in town don't open until 9, so arriving at or before 8:30 will give you the best shot at the best spaces - and early bird savings on my prints!

### **A generous parking offer this Small Business Saturday!**

Bethany Beach Oceanside Suites, a Marriott Residence Inn at 99 Hollywood St. and S. Atlantic Ave. (immediately next to my building) has graciously reserved 10 parking spaces for the use of my tour guests this Saturday, Nov. 26, from 8:30 am to 5 pm.

If you can't find nearby parking in front of my gallery on Saturday, please drive under the portico of the hotel with a tour brochure on your dash and a valet will guide you to a space! (You can print one at [artstudiotour.co](http://artstudiotour.co))

In past years at my old location, with ample parking, my tour brought in nearly 1000 collectors over a 2-day period. With our early opening, people coming and going, and the Marriott's generous offer, I hope everyone who wishes to attend can do so easily!

Please don't hesitate to take advantage of BB Oceanside Suites' kind offer - and if you happen to find your way back to their fine restaurant or bar at 99 Sea Level after tour hours I'm sure they wouldn't mind!

---

extra savings when I open the door of the Ellen Rice Gallery an hour and a half early for my 22nd Annual Studio Tour Open House ~ part of the larger, free, self-guided, two-day SouthEastern Delaware Artists Studio Tour (SEDAST).

Thank you, [Bethany Beach Oceanside Suites](#) General Manager Marcio Azevedo and Sales & Marketing Director Katherine Saad, for your generous support of my art tour!

I'm stop number one on the tour map, which is available as a brochure at my gallery and at [www.artstudiotour.com](http://www.artstudiotour.com).

Friday promises to be a pleasant day and you, your friends and family are warmly invited to come and enjoy the art, very special tour pricing (including extra early hours savings), seasonal music, fresh baked refreshments and good old fashioned holiday cheer.

I've been working to make this tour special for months, but you know what I'm most looking forward to? Relaxing at the tour and getting to see familiar faces, catching up and meeting collectors I've never met!

**Those here when my part of the Studio Tour kicks off Friday at 8:30 a.m.** will be the first

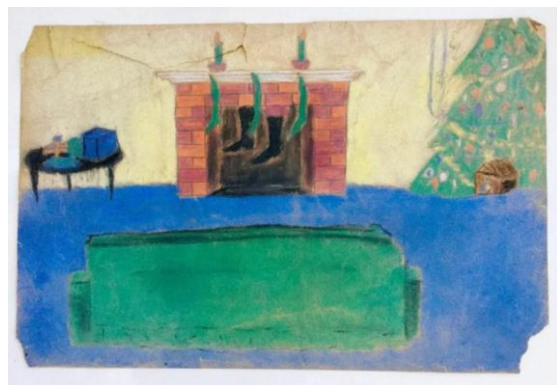
to see and have the opportunity to own the originals and the lowest number prints and small proofs of two of my three debuting paintings:

- My 7th Strength of Woman Series painting, *"In God's Hands"*
- A beautiful rainbow over the beach in *"After the Rain..."*
- And the very wet oil of a black lab puppy asking a sea creature to play despite warnings otherwise, in *"Let's Play!"*

The puppy and a couple of little oil gems of sunset over the back bays may still be in progress, as last minute preparations for the tour have a way of interfering with small brush strokes.

I'll use several other paintings in progress to answer questions and about my painting methods ~ and I'm bringing about a dozen of my childhood works in to encourage budding young artists in their endeavors.

They run the gamut from pastels and watercolors to ink, crayon and pencil drawings. Marked with my age or school year, they show a gradual progression from crude childhood drawings to a teen's emerging talent - demonstrating that with practice, dedication - and encouragement - in art as well as in all walks of life, you can accomplish what your heart desires.



A time worn pastel from Ellen's 8th grade art class is among her early works on display to encourage budding young artists during her tour.

**My annual "Thanksgiving Thank You Gift"** for your support and for coming to the tour are as follows both **Friday and Saturday**:

**From 8:30 a.m. to 10 a.m.** - early guests will receive 25 percent off any signed, numbered limited edition prints of your choice, including my debuting prints!  
**From 10 a.m. to 5 p.m.** - 20 percent off any signed, numbered limited edition prints of your choice, including my debuting prints!

So that I don't leave out loyal collectors who can't be in town, you can receive the 20 percent savings online on all s/n prints by calling 302-539-3405 during the tour. All of my prints except the debuting ones may also be purchased at the 20 percent savings at [www.ellenrice.com](http://www.ellenrice.com). The 20 same savings will also be extended to those of you who visit my gallery after the tour through the end of the week, Sunday, December 4, at 4 p.m.

I am so grateful for the support of so many people over the past 22 years of the tour ~ and beyond that my 40 some years as a professional artist. Whether your purchases have been small gifts and greeting cards or large paintings or commissioned portraits and landscapes, it is you and the One who gives me the talent and ideas who continue to make painting for a living possible.

And thank you everyone who voted for me as Best Artist in Coastal Style Magazine's "Best of" competition this year! I didn't even know I was nominated, but for the second year in a row I was voted best artist in Sussex County, an area that incorporates the entire Delaware coast and an awful lot of talent. I'm humbled.

Thank you. Be safe in your travels wherever they take you. I hope to see you, if not this weekend then next ~ when Bethany is transformed for its 2nd Annual [Winter Wonderland](#) and tree lighting festivities.



A conservation framed canvas gicle'e of Ellen's oil painting, *Evening Splendor*, is her [Art in the Hat raffle](#) donation this year. All ticket sales benefit local school art programs.